



Each operator must have read and understood the instructions.



Wear the protective goggles whenever this symbol appears.



Wear the protective gloves whenever this symbol appears.



### Your responsibility for the perfect coffee experience

The perfect coffee experience depends on a perfectly cleaned coffee machine. Increase the quality of your products!

Clean your coffee machine at least once a day and more frequently if necessary.

### WARNING

#### Risk of acid burns caused by detergent.

The undiluted detergent has an acidic-effect when it comes into contact with skin or clothing.

- Make sure to wear your personal protective equipment.
- Wear protective gloves and protective goggles.
- Make sure that you are particularly focused when replacing on the canister.
- If the detergent gets on your skin or in your eyes, rinse with a lot water and consult your physician.

#### Accessories required:

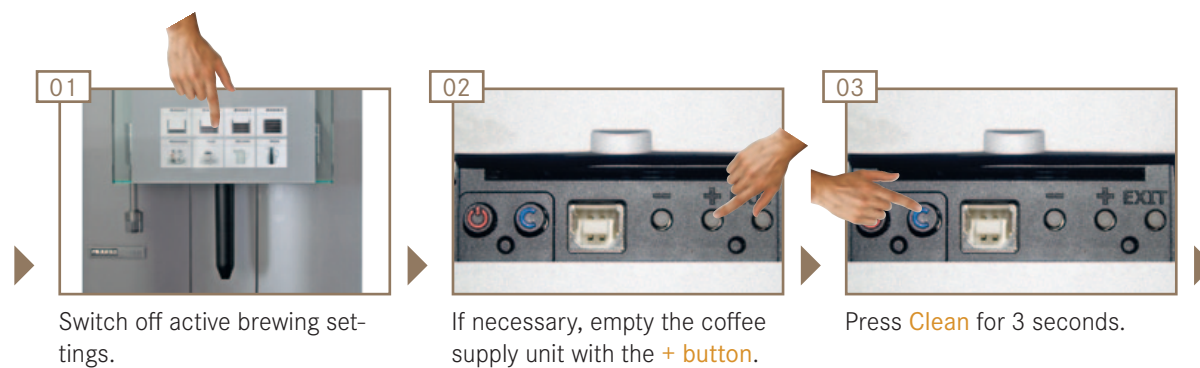
- Microfiber cloth
- Cleaning detergent (canister is pre-installed)
- wear the required protective gloves
- wear the required protective goggles

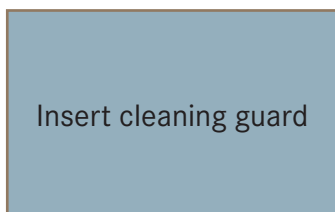
### Adding detergent

The canister with the detergent lasts for approx. 100 cleaning cycles. The coffee maker indicates when the canister must be replaced.

Reserve cleaner: 5 cleaning cycles are still possible

To replace the canister with the detergent, make sure to follow the instructions in the user manual. Make sure to wear your personal protective equipment.





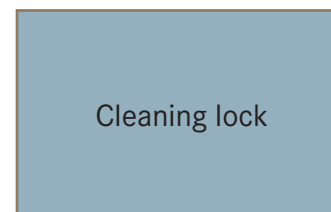
The display reads:  
Insert cleaning guard



04 Turn the outlet tube clockwise by approx. one quarter of a rotation.  
Remove outlet.



05 Attach the cleaning guard and tighten it counterclockwise.  
Press **Clean**.

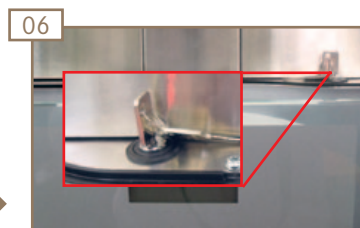


The display reads:  
Cleaning lock

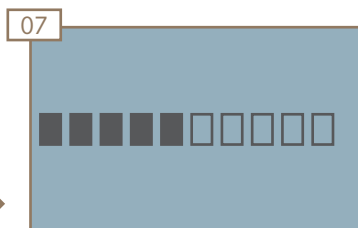


**WARNING**

Danger of scalding from hot water and steam.  
Do not touch the outlets or the area under the outlets.



06 Turn the cleaning lock key clockwise.  
The cleaning pump is activated.



07 The automatic cleaning cycle starts. A symbol indicates the progress.



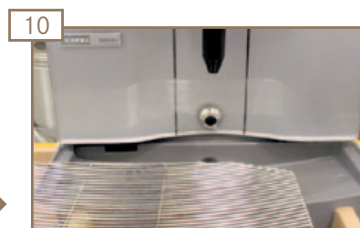
08 If necessary, a neutralizing brewing cycle is performed.



The coffee maker switches to standby mode.



09 Turn the cleaning guard clockwise by approx. one quarter of a rotation.  
Remove cleaning guard.



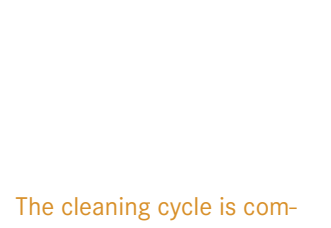
10 Clean the outside of the coffee maker, drip tray and drip grid with a moist cloth.



11 Attach the desired outlet tube and tighten it counterclockwise.



12 Turn the cleaning lock key counterclockwise.



The cleaning cycle is complete.  
The coffee maker can be switched back on.